

Reel

Saturday Night (East Side)

Traditional Whalsay

Musical score for 'Saturday Night (East Side)'. The score is in treble clef, 4/4 time, with a key signature of one sharp (F#). It consists of three staves of music. The first staff contains measures 1-3, the second staff contains measures 4-6, and the third staff contains measures 7-9. The music features a mix of eighth and sixteenth notes, often beamed together. Chord progressions are indicated below the notes. The chords are: D, Bm, E7, A7, D, Em (measures 1-3); A7, D, D, D, E7, A7 (measures 4-6); D, Em, A7, D, A7, D (measures 7-9). There are repeat signs and first/second endings indicated in the third staff.

SET: Beremeal is cheap / Da Black / si Uocks

Reel

Beremeal is Cheap Again (East Side)

Traditional Whalsay

Musical score for 'Beremeal is Cheap Again (East Side)'. The score is in treble clef, 4/4 time, with a key signature of one sharp (F#). It consists of two staves of music. The first staff contains measures 1-4, and the second staff contains measures 5-8. The music features a mix of eighth and sixteenth notes, often beamed together. Chord progressions are indicated below the notes. The chords are: G, G, A7, D7, G, Em, D7, G (measures 1-4); G, Em, A7, D7, G, Em, D7, G (measures 5-8). There are repeat signs and first/second endings indicated in the second staff.

Reel

Da Black an da Broon (East Side)

Traditional Whalsay

Musical score for 'Da Black an da Broon (East Side)'. The score is in treble clef, 4/4 time, with a key signature of one sharp (F#). It consists of two staves of music. The first staff contains measures 1-4, and the second staff contains measures 5-8. The music features a mix of eighth and sixteenth notes, often beamed together. Chord progressions are indicated below the notes. The chords are: D, D, E7, A7, D, Em, A7, D (measures 1-4); C, C, D, D, C, C, A7, D (measures 5-8). There are repeat signs and first/second endings indicated in the second staff.

Reel

SILLOCKS AN' TATTIES (East Side)

Traditional

4

8

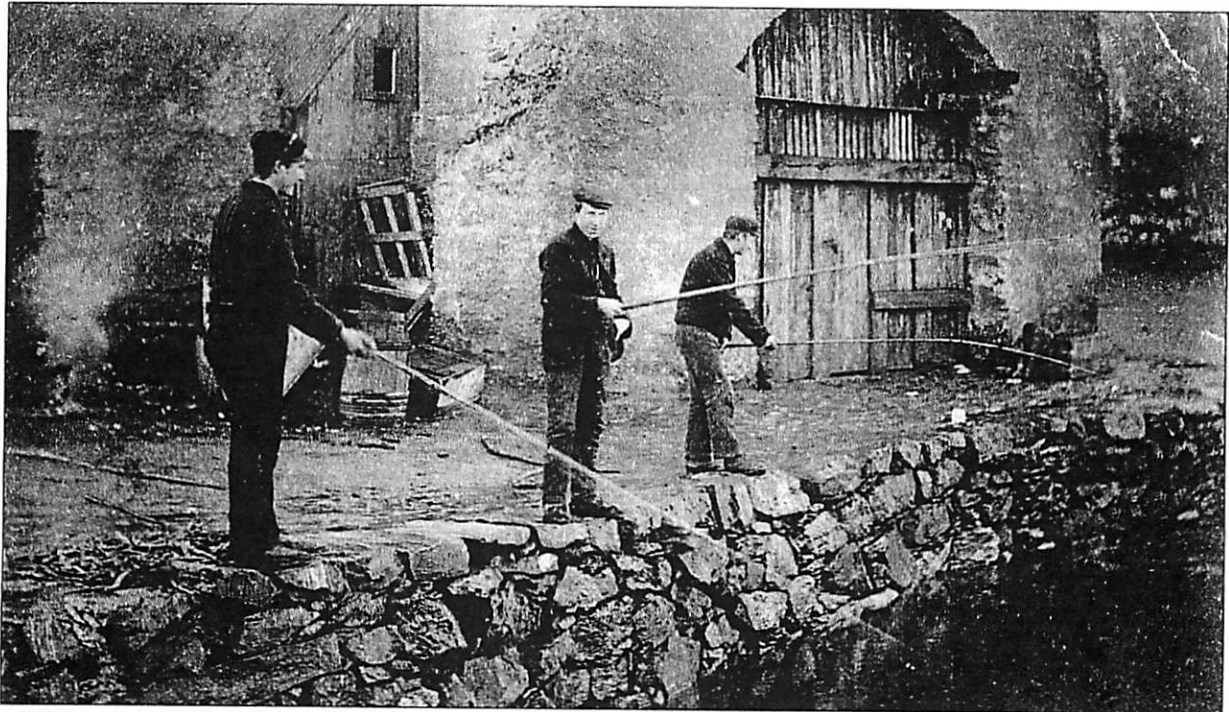
11

D⁷ G D A⁷ D⁷ G

A⁷ D A⁷ D D A⁷ D D

D A⁷ A⁷ D D A⁷

D f[#]/D⁷ G Em A⁷ D



Fishing for Sillocks

© Shetland Museum Photographic Archives

Reel **Taste da Green** (North Isles) as played by Willie Anderson, Herra Yell, 1947

D Bm E7 A7 D Bm A7 D

5 D D E7 A7 D Bm A7 D

Reel **Taste da Green** (North Isles) as played by Lell Robertson, Herra, Yell, 2008

D Bm E7 A7 D Bm A7 D

5 D Bm E7 A7 D Bm A7 D



Laurie Davie Robertson and his son Lell, from Herra, Yell

Reel

DEE STICK DA MINISTEE (North Mainland)

Traditional

Musical notation for "Dee Stick da Ministee" (North Mainland). The piece is in 4/4 time and D major. It consists of two staves of music. The first staff contains measures 1-4 with chords D, A7, D, G, D, A7, E7, and A7. The second staff contains measures 5-8 with chords D, G7, C, C, D, A7, E7, and A7. The notation includes various ornaments such as grace notes and slurs.

Reel

Hamar ower da Taing (North Mainland)

Traditional

Musical notation for "Hamar ower da Taing" (North Mainland). The piece is in 4/4 time and D major. It consists of four staves of music. The first staff contains measures 1-3 with chords A, A, D7, G, A, and A. The second staff contains measures 4-6 with chords G, E7, G, E7, A, and A7, and includes a first and second ending. The third staff contains measures 7-9 with chords D, G, A, A7, D, E7, A, and A7. The fourth staff contains measures 10-11 with chords D7, G, A, A, G, and Em. The notation includes various ornaments such as grace notes and slurs.



Dr Tom Anderson and Aly Bain

© Bruce Spence

Air

Da Humin (North Isles)

Trad Unst

Musical score for 'Da Humin' in 4/4 time. The score consists of three staves of music, each with guitar chords written below the notes. The first staff (measures 1-4) has chords: Am, Am, G, G, Am, Am, Em, Am. The second staff (measures 5-8) has chords: Am, Am, G, Em, Am, D7, G, E7. The third staff (measures 9-12) has chords: Am, D7, G, Em, Am, Am, Em, Am. The piece is marked with a repeat sign at the beginning and end of each staff, and a 'V' (Crescendo) marking above the final measure of each staff.

